

A – Consol Energy; B – Fairmont Supply;
C – Range Resources; D – 1000 Town Center;
E – Embassy Park; F – 4000 Town Center;
G – 4600 J. Barry Center; H – Homewood Suites;
I – Town Center; J - Holiday Inn Express;
K – Mylan; L – Future Development;
M – Southland at Southpointe II



For More Information,
Please Contact:

Michael Swisher
or
Sharon Stanek

724.743.7722

Horizon Properties Group, LLC
375 Southpointe Boulevard
Suite 410
Canonsburg, PA 15317

www.horizonprop.net

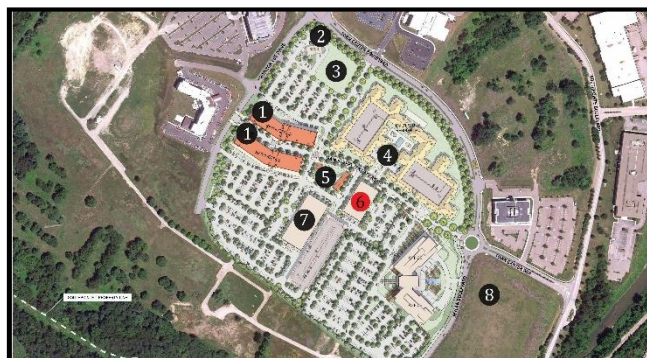
11/17/2017



Property Highlights

Location:	Southpointe, Cecil Township, Washington Co.
Built:	Projected 2016 – 4 th Quarter
Developer:	Horizon Properties Group, LLC
Architect:	Designstream, LLC
Total Building Area:	63,000 Square Feet on 3 floors 21,000 Square Feet per floor
Property Features:	<ul style="list-style-type: none"> • Over 200 free parking spaces • Walkable to restaurants, retail shops, hotels, apartments, Town Square Park and other commercial uses and facilities • 24/7 Security Access • Dual Fiber Optic Providers • Striking architecture in a “Main Street” setting • Adjacent to Town Square Park

Enlarged Town Center Plan



- 1 – Retail and Loft Offices
- 2 – Bank
- 3 – Out Parcel
- 4 – Apartments
- 5 – Town Square
- 6 – Park Place**
- 7 – Town Square Office Building
- 8 – Southland Office Building